

**MOONFLEET 2000**  
**INDOOR BOWLS CLUB**



**HANDBOOK 2019/20**  
**INCLUDING THE WINTER PROGRAMME**  
**OF**  
**NATIONAL, COUNTY & FRIENDLY MATCHES.**  
**& CLUB LEAGUES - TEAMS & RULES**

Knightsdale Road, Weymouth, Dorset, DT4 0HS

Tel: 01305-759106

[www.weymouthindoorbowlingclub.co.uk](http://www.weymouthindoorbowlingclub.co.uk)



## Andy Parsons and Associates

specialising in :

- ◆ Investment Planning
- ◆ Pensions and Retirement Planning
- ◆ Inheritance Tax and Trusts
- ◆ Elderly Care Planning



Andy Parsons Dip PF &  
Prospect House  
Peperell Avenue East  
Poundbury DT1 3WE  
[andy.parsons@sjpp.co.uk](mailto:andy.parsons@sjpp.co.uk)

[www.andyparsonsassociates.com](http://www.andyparsonsassociates.com)

Andy Parsons and Associates

TEL 01305 755667

# Contents

Page No.

Contents	3
Fleetwey Directors, Staff and Subscriptions	4
Moonfleet Officers, County Delegates, Selectors and Coaching Team	5
Presidents Message for 2018/19	6
Honours for 2017/8	7
Club Charity for 2018/9	7
Social Activity Advert	8
Men's National Team Competitions	9
Ladies National Team Competitions	10
Mixed National Team Competitions	11
Inter County Competitions	12
Dorset County Ladies Competition	14
Moonfleet Friendlies	14
Dorset County Men's Competition	15
Wessex League	15
Dorset 60+ league	16/17
Purbeck Challenge Trophy	18
Dorset County Interclub Mixed League	19
Dorset Interclub Ladies League	20/21
Competition and League Winners 2017/18	23/24
Mondays Morning Triples - Divisions 1 and 2	25
Tuesday Morning Men's Triples	26
Tuesday Morning - Australian Pairs - Division 3	26
Wednesday Morning - Australian Pairs - Division 2	27
Wednesday Set Triples	27
Thursday Morning - Australian Pairs - Division 1	28
Thursday Afternoon Triples - Divisions 1 and 2	28
Friday - Over 50s Triples - Divisions 1 and 2	29
Friday - Over 50s Triples - Division 3	30
Tuesday Evening - Ladies Triples	30
Thursday Evening - Men's Rinks	31
Friday Evening - Mixed Rink	31
Monday and Wednesday - Evening Triples - Divisions 1 and 2	32
Advert – Kitchen and Bar	33
League Rules	34/39
Bowls Etiquette	40
FIRE INSTRUCTIONS and Exit Plan	41/43

**FLEETWEY LTD**  
**Incorporating**  
**MOONFLEET 2000 I.B.C.:**

Company Secretary:	Shirley Bowley
Directors:	Trevor Andrews(Chairman) Shirley Bowley , Ian Locke Doug Obee, Chris Thompson , Peter Why.
Bowls Club Manager:	Mike Gale
Office Manager:	Kerry Gwilliam
Bar Staff	Brian Martindill Colin Wall

**SUBSCRIPTIONS 2019/20**

Joining Free (Full Subscription)	£10.00
Full Subscription	£100.00
Junior/Student	FREE
Joining Fee (Social)	£ 5.00
Social Subscription	£10.00
Locker	£ 5.00
FOB Deposit	£ 5.00

Breakdown of Affiliation included in Annual Subscription Fees

Ladies		Men	
EIBA Levy	£3.70	EIBA Levy	£3.70
DCLIBA Capitation	£3.50	DCMIBA Capitation	£1.75
Moonfleet 2000 Sub.	£92.80	Moonfleet 2000 Sub	£94.55

## MOONFLEET 2000 OFFICERS AND COMMITTEE

President:	Helen Monelle
President:	Charles Langridge
Past President	Phil Lock
Club Secretary:	Mike Browne
Men's Captain:	Jim Hamilton
Ladies Captain:	Jill Gwilliam
Men's Comp Sec:	Steve Wilson
Ladies Comp Sec:	Jennifer Browne
League Secretary	Andy Short
Bowls Development:	Doug Plumpton
Men's Vice Captain:	Richard Casely
Ladies Vice Captain:	Carole Venton
Men's Secretary	Tim Munro
Ladies Secretary:	Julie Watts
Social Organiser	Jennie Brown
<b>County Delegates:</b>	
Men's:	Charles Langridge Howard King
Ladies:	Jill Gwilliam Julie Watts
<b>Selectors:</b>	
Men's:	Tim Munro Kelvyn Churchill Mike Day
Ladies:	Jennie Brown Liz Williams Julie Watts
<b>Coaching Team:</b>	
Juniors:	Nick Worsley Helen Monelle
Disabled:	Rosaline Whyte
Visually Impaired	Mike Goddard
Beginners & Improvers	Sheila Goddard
Coaching Squad	Doug Plumpton Derek Wensley Howard King Alan Churches Derek Spicer Julie Watts Judy Why

## **Presidents Message**

Welcome to the beginning of a new Season of Indoor Bowls, especially to our newer bowlers starting their first full season, and those returning from their summer outdoors.

The Club Open Days last season were a huge success, thanks to the hard work put in by Club coaches, ably assisted by many willing volunteers. A large number of people who signed up for the Beginners Courses have gone on to join the Club. The work of all those who volunteer in all aspects of the running and promoting of the club is much appreciated as, without them, it wouldn't operate so smoothly.

Finally I wish you all an enjoyable and successful season and remember if asked to play for YOUR club please make every effort to do so, it's your participation that keeps Moonfleet 2000 competitive and successful.

Regards

Helen Monelle.

## **CLUB CHARITY FOR 2019/20**

The Charity chosen at the 2019 AGM for the Charity Year Oct 2019-Sept 2020

is **BUS SHELTER.**

The double decker bus situated in the northern corner of the Car Park off Preston Road has been converted into a mobile shelter for the rough sleepers, to sleep safely and off the streets. The Charity believes that, if people have their basic needs of sleep, food, water, warmth and safety met, they will be able to work positively on achieving their goals and improving their future. The funds raised will go to supporting the charity to maintain this service.

## **Club and Members Honours for 2018/19 season**

### **National Competitions**

**Martin Puckett** unfortunately is no longer a member of our club but as winner of the Winter Singles Competition in 2017/8 represented Moonfleet at the National Champion of Champions in 2019 and WON.

**Keith Wyman, Doug Rumble and Adam Tidby** were semi-finalists in the National Over 50's Trophy.

### **County**

**Our Team** won the County Mixed League for the 3<sup>rd</sup> year running

**Our Team** won the Purbeck Challenge Trophy

**Mary Dunne** came Runner Up in the Ladies County Filly Cup.

**Brandon King** won the County Under 25's Singles title

# CLUB SOCIAL ACTIVITIES

Besides the advertised social functions

we have a



## Bridge Group

Friday afternoons 3.30pm

To join contact Malcolm Smith on

## Whist Group

Tuesday evenings 6.30 to 9pm

To join contact Roy Glover on

## Pool Table

for use anytime the Club is

Open



**Plus - A Book Library,**

Jigsaw Puzzle Library and

CD and DVD Library

Or just relax, get a drink from the  
dispenser or Bar and watch the action on the Rinks



## MEN'S NATIONAL TEAM COMPETITIONS

### DENNY CUP (Two rinks home and two away)

#### 2019

Preliminary Round	Saturday	5 <sup>th</sup> October
1 <sup>st</sup> Round	Saturday	19 <sup>th</sup> October
2 <sup>nd</sup> Round	Saturday	2 <sup>nd</sup> November
3 <sup>rd</sup> Round	Saturday	16 <sup>th</sup> November
4 <sup>th</sup> Round	Saturday	7 <sup>th</sup> December

#### 2020

5 <sup>th</sup> Round	Saturday	4 <sup>th</sup> January
Quarter Final	Saturday	18 <sup>th</sup> January
Semi Final and Final	Saturday	7 <sup>th</sup> March

### DENNY PLATE

Rounds 1 to QF above

Semi Final	Saturday	7 <sup>th</sup> March
Final	Saturday	28 <sup>th</sup> March or 4 <sup>th</sup> April

### MEN'S OVER 60 DOUBLE RINK (One rink home and one away)

#### 2019

Prelim Round	Tuesday	15 <sup>th</sup> October
1 <sup>st</sup> Round	Tuesday	5 <sup>th</sup> November
2 <sup>nd</sup> Round	Tuesday	26 <sup>th</sup> November
3 <sup>rd</sup> Round	Tuesday	10 <sup>th</sup> December

#### 2020

4 <sup>th</sup> Round	Tuesday	7 <sup>th</sup> January
5 <sup>th</sup> Round	Tuesday	4 <sup>th</sup> February
Quarter Final	Tuesday	3 <sup>rd</sup> March
Semi Final	Thursday	Between 9 <sup>th</sup> and 12 <sup>th</sup> April
Final	Friday	Between 9 <sup>th</sup> and 12 <sup>th</sup> April

## LADIES NATIONAL TEAM COMPETITIONS

### YETTON TROPHY (Two rinks home and two away)

#### 2019

Preliminary Round	Saturday	5 <sup>th</sup> October
1 <sup>st</sup> Round	Saturday	19 <sup>th</sup> October
2 <sup>nd</sup> Round	Saturday	2 <sup>nd</sup> November
3 <sup>rd</sup> Round	Saturday	16 <sup>th</sup> November
4 <sup>th</sup> Round	Saturday	7 <sup>th</sup> December

#### 2020

5 <sup>th</sup> Round	Saturday	4 <sup>th</sup> January
-----------------------	----------	-------------------------

Quarter Finals	Saturday	18 <sup>th</sup> January
Semi Final and Finals	Saturday	14 <sup>th</sup> March

### **YETTON PLATE**

Preliminary Round to Quarter Final as Yetton Rounds to Quarter Final

Semi Final	Saturday	15 <sup>th</sup> February
Final	Saturday	28 <sup>th</sup> March or 4 <sup>th</sup> April

### **VIVIENNE TROPHY (Two rinks home and two away)**

#### **2019**

1 <sup>st</sup> Round	Thursday	7 <sup>th</sup> November
2 <sup>nd</sup> Round	Thursday	28 <sup>th</sup> November

#### **2020**

3 <sup>rd</sup> Round	Thursday	9 <sup>th</sup> January
4 <sup>th</sup> Round	Thursday	23 <sup>rd</sup> January
Quarter Final	Thursday	6 <sup>th</sup> February
Semi Final	Thursday	20 <sup>th</sup> February
Final	Friday	3 <sup>rd</sup> April

### **MASON TROPHY OVER 60 DOUBLE RINK (One Home and One Away)**

#### **2019**

Preliminary Round	Friday	1 <sup>st</sup> November
1 <sup>st</sup> Round	Friday	22 <sup>nd</sup> November
2 <sup>nd</sup> Round	Friday	6 <sup>th</sup> December

#### **2020**

3 <sup>rd</sup> Round	Friday	17 <sup>th</sup> January
4 <sup>th</sup> Round	Friday	14 <sup>th</sup> February
5 <sup>th</sup> Round	Friday	28 <sup>th</sup> February
Quarter Final	Friday	20 <sup>th</sup> March
Semi Final	Friday	27 <sup>th</sup> March
Final	Saturday	28 <sup>th</sup> March

### **NATIONAL MIXED TEAM COMPETITIONS**

### **EGHAM TROPHY (Two Mixed Rinks Home and Two Away)**

#### **2019**

Preliminary Round	Sunday	13 <sup>th</sup> October
1 <sup>st</sup> Round	Sunday	27 <sup>th</sup> October
2 <sup>nd</sup> Round	Sunday	10 <sup>th</sup> November
3 <sup>rd</sup> Round	Sunday	24 <sup>th</sup> November
4 <sup>th</sup> Round	Sunday	8 <sup>th</sup> December

#### **2020**

Quarter Final	Sunday	12 <sup>th</sup> January
Semi Final	Sunday	1 <sup>st</sup> March
Final	Sunday	29 <sup>th</sup> March

**TOP CLUB** (Mixed - 2 Wood Fours, Mixed 3 Wood Triples, Mixed 4 Wood Pairs, Ladies 2 Wood Singles and Men's 2 Wood Singles)

**2019**

Preliminary	Sunday	20 <sup>th</sup> October
1 <sup>st</sup> Round	Sunday	17 <sup>th</sup> November
2 <sup>nd</sup> Round	Sunday	15 <sup>th</sup> December

**2020**

3 <sup>rd</sup> Round	Sunday	5 <sup>th</sup> January
Quarter Final	Sunday	16 <sup>th</sup> February
Semi Final and Final	Saturday	25 <sup>th</sup> April

**INTER COUNTY COMPETITIONS**

**LIBERTY TROPHY (Men)**

**2019**

1 <sup>st</sup> Round	Saturday	26 <sup>th</sup> October
2 <sup>nd</sup> Round	Saturday	14 <sup>th</sup> December

**2020**

Quarter Finals	Saturday	11 <sup>th</sup> January
Semi Final	Saturday	29 <sup>th</sup> February
Final	Saturday	Weekend of 4 <sup>th</sup> or 11 <sup>th</sup> April

**ATHERLEY TROPHY (Ladies) -**

**2019**

1 <sup>st</sup> Round	Saturday	26 <sup>th</sup> October
2 <sup>nd</sup> Round	Saturday	14 <sup>th</sup> December

**2020**

Quarter Final	Saturday	11 <sup>th</sup> January
Semi Final	Saturday	29 <sup>th</sup> February
Final	Saturday	Weekend of 28 <sup>th</sup> March or 4 <sup>th</sup> April

**MEN'S OVER 60 COUNTY KNOCKOUT INTER COUNTY COMPETITION**

**2019**

	<b>Day</b>	<b>Date</b>
1 <sup>st</sup> Round	Tuesday	22 <sup>nd</sup> October
2 <sup>nd</sup> Round	Tuesday	19 <sup>th</sup> November

**2020**

3 <sup>rd</sup> Round	Tuesday	21 <sup>st</sup> January
Semi Final	Tuesday	18 <sup>th</sup> February
Final	Saturday	Weekend of 21 <sup>st</sup> March

**AERIAL & SATELLITE SALES, INSTALLATION & REPAIRS**

# **WESSEX AERIALS**

**SKY  
AUTHORISED AGENT**

**Manor Farm Buildings**

**Watery Lane**

**Weymouth**

**Tel: (01305)813010**

## DORSET COUNTY LADIES INDOOR BOWLING ASSOCIATION

President: Jenny Osborne (Bournemouth)

### COUNTY FIXTURE LIST - 2019/20

Day	Date	Time	Team	Venue
Fri	11 <sup>th</sup> Oct	2.pm	Bournemouth Ladies	Bournemouth
Sat	26 <sup>th</sup> Oct	1.30pm	Wiltshire	Dolphin
Mon	4 <sup>th</sup> nov	1.30pm	Cornwall (SWCL)	Taunton Deane
Mon	18 <sup>th</sup> Nov	1.30pm	Somerset (SWCL)	Dorchester
Mon	9 <sup>th</sup> Dec	1.45pm	Devon (SWCL)	Plymouth
Sat	14 <sup>th</sup> Dec		Atherley Round One	
Sat	11 <sup>th</sup> Jan		Atherley Quart. Final	
Mon	13 <sup>th</sup> Jan	1.30pm	Somerset (SWCL)	Taunton Deane
Mon	27 <sup>th</sup> Jan	1.30pm	Devon (SWCL)	Moonfleet
Mon	17 <sup>th</sup> Feb	1.30pm	Cornwall (SWCL)	Taunton Deane
Sun	23 <sup>rd</sup> Feb	2pm	DCIBA Men	Dolphin
Sat	29 <sup>th</sup> Feb		Atherley Semi Final	
Thurs	19 <sup>th</sup> Mar	1.30	Hampshire	Atherley
Sat	28 <sup>th</sup> Mar or 4 <sup>th</sup> Mar		ATHERLEY FINAL	
Mon	6 <sup>th</sup> Apr	1pm	Sussex	Adur

### MOONFLEET FRIENDLY MATCH FIXTURES 2018/19

2019

Day	Date	Time	Team	Game	Dress
Sun	6 <sup>th</sup> Oct	2pm	Stour Vale	6 Rinks Triples	Greys
Fri	18 <sup>th</sup> Oct	12 Noon	English Invitation Bowls Tourists	6 Rinks	Greys
Tues	11 <sup>th</sup> Nov	2pm	Minehead	6 Mixed Rinks	Greys
Wed	12 <sup>th</sup> Nov	2pm	Bridport (Away)	4 Mixed Rinks	Greys
Sunday 2020	8 <sup>th</sup> Dec	2pm	Bridport (Home)	6 Mixed Rinks	Greys
Sun	16 <sup>th</sup> Feb	2pm	South Dorset B.A.	4/5 Mixed Rinks	Greys
Mon	17 <sup>th</sup> Feb	1.30	West Berks	6 Mixed Rinks	Greys
Friday	20 <sup>th</sup> Mar	1.30pm	Plymouth Civil Service Ass.	6 Mixed Rinks	Greys

## **DORSET COUNTY MEN'S COMPETITIONS**

**At the time of going to print a full listing was not available, the listing when received will be put on the county section of the noticeboards**

### **WESSEX LEAGUE**

**(Two Rinks home and two away)**

#### **MOONFLEET A – Jurassic Region**

2019

Sunday 3<sup>rd</sup> November Moonfleet B

Sunday 24<sup>th</sup> November Bridport

Sunday 8<sup>th</sup> December Ilminster

2020

Sunday 19<sup>th</sup> January Dorchester B

Sunday 23<sup>rd</sup> February Dorchester A

#### **MOONFLEET B – Jurassic Region**

2019

Sunday 3<sup>rd</sup> November Moonfleet A

2020

Sunday 5<sup>th</sup> January Bridport

Sunday 19<sup>th</sup> January Dorchester A

Sunday 16<sup>th</sup> February Dorchester B

Sunday 23<sup>rd</sup> February Ilminster

### **WESSEX FINAL STAGES**

1st Round Play Offs Sunday 8<sup>th</sup> March

Quarter Finals Sunday 15<sup>th</sup> March

Semi Finals Sunday 22<sup>st</sup> March Tamworth and Five Rivers

Final Sunday 5<sup>th</sup> April At Bristol City & County IBC

**DORSET 60+ "A" LEAGUE (Two Triples)**  
**MOONFLEET A**

2019	Date	Time	Team	Venue
Thursday	24 <sup>th</sup> October	11.30am	Dolphin D	Away
Monday	28 <sup>th</sup> October	1.30pm	Moonfleet D	Home
Tuesday	5 <sup>th</sup> November	11.30am	Dolphin A	Away
Thursday	21 <sup>st</sup> November	11.30am	Bridport A	Away
Monday	25 <sup>th</sup> November	1.30pm	Bournemouth	Home
Friday	29 <sup>th</sup> November	12 Noon	Dorset Resort	Away
Tuesday	10 <sup>th</sup> December	1.30pm	Dorchester A	Home
Monday	16 <sup>th</sup> December	1.30pm	Dolphin D	Home
2020				
Monday	6 <sup>th</sup> January	1.30pm	Moonfleet D	Away
Monday	13 <sup>th</sup> January	1.30pm	Dolphin A	Home
Tuesday	21 <sup>st</sup> January	1.30pm	Bridport A	Home
Tuesday	28 <sup>th</sup> January	12 Noon	Bournemouth	Away
Monday	10 <sup>th</sup> February	1.30pm	Dorset Resort	Home
Thursday	20 <sup>th</sup> February	1.30pm	Dorchester A	Away

**DORSET 60+ "B" LEAGUE (Two Triples)**  
**MOONFLEET B**

2019	Date	Time	Team	Venue
Monday	21 <sup>st</sup> October	1.30pm	Dorchester B	Home
Friday	1 <sup>st</sup> November	9.30am	Wellworthy	Away
Monday	4 <sup>th</sup> November	1.30pm	Moonfleet C	Home
Thursday	21 <sup>st</sup> November	1.30pm	Bridport B	Home
Monday	25 <sup>th</sup> November	11.30am	Dolphin B	Away
Thursday	5 <sup>th</sup> December	11.30am	Dolphin C	Away
Wednesday	18 <sup>th</sup> December	1.30pm	Dorchester B	Away
2020				
Monday	6 <sup>th</sup> January	1.30pm	Wellworthy	Home
Monday	13 <sup>th</sup> January	1.30pm	Moonfleet C	Away
Thurs	23 <sup>rd</sup> January	11.30am	Bridport B	Away
Tuesday	28 <sup>th</sup> January	1.30pm	Dolphin B	Home
Monday	10 <sup>th</sup> February	1.30pm	Dolphin C	Home

**DORSET 60+ "B" LEAGUE (Two Triples)**  
**MOONFLEET C**

2019	Date	Time	Team	Venue
Monday	21 <sup>st</sup> October	1.30pm	Dolphin B	Home
Thursday	31 <sup>st</sup> October	10.00am	Dorchester B	Away
Monday	4 <sup>th</sup> November	1.30pm	Moonfleet B	Away
Monday	25 <sup>th</sup> November	1.30pm	Dolphin C	Home
Thursday	5 <sup>th</sup> December	11.30am	Bridport B	Away
Tuesday	10 <sup>th</sup> December	1.30pm	Wellworthy	Home
Monday	16 <sup>th</sup> December	11.30am	Dolphin B	Away
2020				
Monday	6 <sup>th</sup> January	1.30pm	Dorchester B	Home
Monday	13 <sup>th</sup> January	1.30pm	Moonfleet B	Home
Thursday	30 <sup>th</sup> January	11.30am	Dolphin C	Away
Thursday	13 <sup>th</sup> February	1.30pm	Bridport B	Home
Friday	21 <sup>st</sup> February	9.30am	Wellworthy	Away

**DORSET 60+ "A" LEAGUE (Two Triples)**  
**MOONFLEET D**

2019	Date	Time	Team	Venue
Thursday	24 <sup>th</sup> October	1.30pm	Bridport A	Home
Monday	28 <sup>th</sup> October	1.30pm	Moonfleet A	Away
Monday	4 <sup>th</sup> November	1.30pm	Dorchester A	Home
Tuesday	19 <sup>th</sup> November	12 noon	Bournemouth	Away
Tuesday	26 <sup>th</sup> November	1.30pm	Dolphin A	Home
Thursday	5 <sup>th</sup> December	11.30am	Dolphin D	Away
Tuesday	10 <sup>th</sup> December	1.30pm	Dorset Resort	Home
Thursday	19 December	11.30am	Bridport A	Away
2020				
Monday	6 <sup>th</sup> January	1.30pm	Moonfleet A	Home
Wednesday	8 <sup>th</sup> January	1.30	Dorchester A	Away
Monday	20 <sup>th</sup> January	1.30pm	Bournemouth	Home
Tuesday	28 <sup>th</sup> January	11.30am	Dolphin A	Away



Monday	10 <sup>th</sup> February	1.30pm	Dolphin D	Home
Friday	21 <sup>st</sup> February	12 noon	Dorset Resort	Away

**PURBECK CHALLENGE TROPHY – (Two Triples) - Section A  
MOONFLEET 'A'  
2019**

Tuesday	8 <sup>th</sup> October	1.30pm	Bournemouth	Home
Wednesday	16 <sup>th</sup> October	1.30pm	Dolphin	Away
Tuesday	29 <sup>th</sup> October	1.30pm	Bridport	Home
Thursday	14 <sup>th</sup> November	10am	Dorchester	Away
Monday	18 <sup>th</sup> November	1.30pm	Wellworthy	Home
Friday	6 <sup>th</sup> December	12 Noon	Bournemouth	Away
Monday	9 <sup>th</sup> December	1.30pm	Dolphin	Home
Thursday	19 <sup>th</sup> December	11.30a m	Bridport	Away

**2020**

Tuesday	14 <sup>th</sup> January	1.30pm	Dorchester	Home
Tuesday	21 <sup>st</sup> January	10.30a m	Wellworthy	Away

**PURBECK CHALLENGE TROPHY – (Two Triples) - Section B  
MOONFLEET 'B'  
2019**

Tuesday	8 <sup>th</sup> October	10.00a m	Dorset Resort	Away
Monday	28 <sup>th</sup> October	1.30pm	Wellworthy	Home
Monday	4 <sup>th</sup> November	1.30pm	Bridport B	Home
Friday	22 <sup>nd</sup> November	12 Noon	Bournemouth B	Away
Monday	25 <sup>th</sup> November	1.30pm	Dorchester B	Home
Wednesday	4 <sup>th</sup> December	1.30pm	Dolphin B	Away
Monday	9 <sup>th</sup> December	1.30pm	Dorset Resort	Home
<b>2020</b>				
Wednesday	8 <sup>th</sup> January	2pm	Wellworthy	Away
Wednesday	15 <sup>th</sup> January	11.30a m	Bridport B	Away
Monday	20 <sup>th</sup> January	1.30pm	Bournemouth B	Home
Thursday	30 <sup>th</sup> January	10.00a m	Dorchester B	Away

Monday 3<sup>rd</sup> February 1.30pm Dolphin B Home

## **DORSET COUNTY INTER CLUB MIXED LEAGUE**

**(Two rinks at home or away)**

Dress Greys – at weekend

### **MOONFLEET PIRATES**

2019/20

Sunday	13 <sup>th</sup> October	10am	Wellworthy	Away
Sunday	20 <sup>th</sup> October	10am	Moonfleet Smugglers	Home
Sunday	3 <sup>th</sup> November	10am	Dolphin 2	Away
Sunday	24 <sup>th</sup> November	10am	Bournemouth	Home
Sunday	1 <sup>st</sup> December	10am	Dorchester	Away
Sunday	12 <sup>th</sup> January	10am	Bridport	Away
Sunday	19 <sup>th</sup> January	10am	Dolphin 1	Home
Sunday	2 <sup>nd</sup> February	10am	Wellworthy	Home
Sunday	9 <sup>th</sup> February	10am	Moonfleet Smugglers	Home
Sunday	23 <sup>rd</sup> February	10am	Dolphin 2	Home
Sunday	8 <sup>th</sup> March	10am	Bournemouth	Away
Sunday	15 <sup>th</sup> March	10am	Dorchester	Home
Sunday	22 <sup>nd</sup> March	10am	Bridport	Home
Sunday	5 <sup>th</sup> April	10am	Dolphin 1	Away

### **MOONFLEET SMUGGLERS**

2019/20

Sunday	13 <sup>th</sup> October	10am	Bournemouth	Home
Sunday	20 <sup>th</sup> October	10am	Moonfleet Pirates	Away
Sunday	3 <sup>th</sup> November	10am	Bridport	Home
Sunday	24 <sup>th</sup> November	10am	Dolphin 1	Away
Sunday	1 <sup>st</sup> December	10am	Wellworthy	Home
Sunday	12 <sup>th</sup> January	10am	Dorchester	Home
Sunday	19 <sup>th</sup> January	10am	Dolphin 2	Away

Sunday	2 <sup>nd</sup> February	10am	Bournemouth	Away
Sunday	9 <sup>th</sup> February	10am	Moonfleet Pirates	Home
Sunday	23 <sup>rd</sup> February	10am	Bridport	Away
Sunday	8 <sup>th</sup> March	10am	Dolphin 1	Home
Sunday	15 <sup>th</sup> March	10am	Wellworthy	Away
Sunday	22 <sup>nd</sup> March	10am	Dorchester	Away
Sunday	5 <sup>th</sup> April	10am	Dolphin 2	Home

### **DORSET COUNTY INTER CLUB LADIES LEAGUE - (Two Rinks) Division 1**

MOONFLEET A Dress: Greys

2019/20

Thursday	17 <sup>th</sup> October	1.30pm	Dolphin B	Home
Wednesday	23 <sup>rd</sup> October	1.30pm	Moonfleet B	Away
Thursday	31 <sup>st</sup> October	1.30pm	East Dorset	Home
Tuesday	5 <sup>th</sup> November	2pm	Bournemouth	Away
Thursday	14 <sup>th</sup> November	1.30pm	Dorchester C	Home
Thursday	21 <sup>st</sup> November	1.30pm	Dorchester A	Away
Wednesday	4 <sup>th</sup> December	11.30am	Bridport A	Away
Thursday	12 <sup>th</sup> December	1.30pm	Dolphin A	Home
Wednesday	15 <sup>th</sup> January	1.30pm	Dolphin B	Away
Wednesday	22 <sup>nd</sup> January	1.30pm	Moonfleet B	Home
Thursday	30 <sup>th</sup> January	1.30pm	East Dorset A	Away
Thursday	6 <sup>th</sup> February	1.30pm	Bournemouth	Home
Thursday	13 <sup>th</sup> February	1.30pm	Dorchester C	Away
Thursday	20 <sup>th</sup> February	1.30pm	Dorchester A	Home
Thursday	5 <sup>th</sup> March	1.30pm	Bridport A	Home
Wednesday	11 <sup>th</sup> March	11.30am	Dolphin A	Away

MOONFLEET B Division 1

2019/20

Wednesday	16 <sup>th</sup> October	1.30pm	Dolphin A	Away
Wednesday	23 <sup>rd</sup> October	1.30pm	Moonfleet A	Home
Tuesday	29 <sup>th</sup> October	2pm	Bournemouth A	Away
Wednesday	6 <sup>th</sup> November	1.30pm	Dorchester A	Home
Friday	15 <sup>th</sup> November	11.30am	Bridport A	Away
Wednesday	20 <sup>th</sup> November	1.30pm	Dolphin B	Home
Wednesday	27 <sup>th</sup> November	12noon	East Dorset A	Away
Wednesday	4 <sup>th</sup> December	1.30pm	Dorchester C	Home

Wednesday	15 <sup>th</sup> January	1.30pm	Dolphin A	Home
-----------	--------------------------	--------	-----------	------

Wednesday	22 <sup>nd</sup> January	1.30pm	Moonfleet A	Away
Wednesday	29 <sup>th</sup> January	1.30pm	Bournemouth A	Home
Monday	3 <sup>rd</sup> February	1.30pm	Dorchester A	Away
Wednesday	12 <sup>th</sup> February	1.30pm	Bridport A	Home
Wednesday	19 <sup>th</sup> February	1.30pm	Dolphin B	Away
Wednesday	26 <sup>th</sup> February	1.30pm	East Dorset A	Home
Thursday	5 <sup>th</sup> March	1.30pm	Dorchester C	Away

### **DORSET COUNTY INTER CLUB LADIES LEAGUE (Two Rinks) Division 2**

Moonfleet C     Dress: Greys

Monday	14 <sup>th</sup> October	1.30pm	Bournemouth B	Home
Tuesday	22 <sup>nd</sup> October	10am	Dorset Resort	Away
Monday	28 <sup>th</sup> October	1.30pm	Dorchester B	Home
Thursday	7 <sup>th</sup> November	1.30pm	Dolphin C	Away
Thursday	14 <sup>th</sup> November	1.30pm	East Dorset B	Away
Wednesday	20 <sup>th</sup> November	11.30am	Bridport B	Away
Monday	25 <sup>th</sup> November	2pm	Wellworthy	Away
Tuesday	3 <sup>rd</sup> December	12 noon	Bournemouth B	Away
Monday	9 <sup>th</sup> December	1.30pm	Dorset Resort	Home
Thursday	16 <sup>th</sup> January	1.30pm	Dorchester B	Away
Thursday	30 <sup>th</sup> January	1.30pm	Dolphin C	Home
Wednesday	5 <sup>th</sup> February	1.30pm	East Dorset B	Home
Wednesday	19 <sup>th</sup> February	1.30pm	Bridport B	Home
Monday	24 <sup>th</sup> February	1.30pm	Wellworthy	Home

*Looking for a Venue*



*For that Special*

*Occasion*

*Anniversary or Birthday Party*



*Surprise Party, Meetings, Re-Unions*

*Retirement*



*Celebrations*

*Why Not use the Bowls Club Lounge*

*Price on request*

*Also available for Funeral Wakes*

## COMPETITION WINNERS \_ WINTER 2018/19

### NOVICES COMPETITIONS

<u>Competition</u>	<u>Winners</u>	<u>Runners Up</u>
Novices Singles	Andy Boatswain	Bob Bullin
Novices Drawn Triples	Erika Fry	Steve Sparnon
	Di Carteur	Andy Boatswain
	Marty Groves	Martin White

### CLUB COMPETITIONS

<u>Competition</u>	<u>Winners</u>	<u>Runners Up</u>
Ladies Drawn Triples	Gwen Rees	Val Spicer
	Di. Carteur	Mairi Mathie
	Eileen Devonald-Batt	Carole Venton
Men's Triples	Mike Day	Derek Spicer
	Mike Durrant	Andy Clark
	Jamie Watkiss	Roger Bolton
Mixed Triples	Warren Smith	Ryan Nash
	Anne Chislett	Kath Desmond
	Mike Chislett	Barry Patterson
Mixed Pairs	Mairi Mathie	Mary Bull
	Jack Mathie	Ashley Welsh
2 Wood Drawn Pairs	Trixie Dempsey	Brian Kibbey
	Colin Chatburn	Pat Rod
Drawn H/cap Pairs	Di Carteur	Carole. Venton
	Colin Chatburn	Eddie Rees

Australian Pairs	Linda Bryson	Val Spicer
	Gill Lock	Derek Spicer
Ladies Pairs	Karen Hofen	Gwen Rees
	Margaret Crawford	Val Spicer
Mens Pairs	Ryan Nash	Dave Clegg
	Barry Patterson	Malcolm Smith
Ladies Veteran Singles	Eileen Devonald-Batt	Ruthie Neary
Men's Veteran Singles	Tim Munro	Eddie Rees
Ladies Singles	Anne Chislett	Linda Bryson
Men's Singles	Jamie Watkiss	Andy Clark

### **LEAGUE WINNERS for WINTER 2018/9**

<u>League</u>		<u>Winners</u>	<u>Runner Ups</u>
Mon. Morning Triples	Div 1	Aces	Goodies
	Div 2	Egg and Chips	Bejays
Tuesday Morning Triples		Saxons	Bowled Over
Tues.--Australian Pairs	Div 3	Convicts	Vixens
Wednesday	Div 2	Crocodile Dundee	Fair Dinkum
Thursday	Div 1	Boomerangs	Kookaburras
Wednesday- Set Triples		Chillis	New Shoots
Thurs. Afternoon Triples	Div 1	Early Birds	Longniddy
	Div2	Conviction	6 Of Us
Friday-Over 50s Triples	Div 1	Sixty Niners	Lincnotts
	Div 2	Dreamers	Twitchers
	Div 3	Pie N Mash	Winter 6

Evening Triples	Div 1	Outsiders	Headsbangers
	Div 2	Triple Jacks	Shot 2 Bit2 Again
Tuesday Evening Ladies Triples		Snapdragons	Tulips
Thursday Eve. Two Set Triples		Chillis	Young Guns
Friday Evening Mixed Rinks		The Bowling Stones	Pick and Mix

**At the Prize giving on the Winter Presentation Evening**

**The Jim Hamilton Cup for the most improved junior was presented to  
Jodie Phillips**

**The Presidents Appreciation Trophy was presented to Malcolm Smith  
for his work with the Clubs Website and Online booking**

**MONDAY TRIPLES: DIVISION 1**

**Shield donated by Brian & Janet Flann**

**MONDAYS: 9.30am-11.30am and 11.30am-1.30pm**

ACES	Alan Churches
BEJAYS	Jan Flann
CHABLIS DRESSED	Steve Wilson
EDDIE EAGLES	Eddie Chapman
EGG AND CHIPS	Dave Blackmore
GOODIES	Norman Byden
HASSELLS	Mary Corben
OPTIMISTS	Elna McSevney
PUTTERS	Roger Bolton



SEA DOWN	Liz Williams
TIGGERS	Tim Munro
VIKINGS	Richard White

## **MONDAY TRIPLES: DIVISION 2**

Shield donated by Bee cars

**MONDAYS: 9.30am-11.30am and 11.30am-1.30pm**

BADDIES	Glynis Thorne
BEVERLEY HILL BILLYS	Mike Hill
CHORANS	Bruce Taylor
FAREE NUFF	David Broad
GEEBEEES	Richard Gale
JACKSEEKERS	Jim Paul
NEW BEES	Kevin Alcock
PERSEVERANCE	Bob Prendergast
ROCKETS	Syd Stephenson
SCREAMING EAGLRS	Sandy Sanders
SHIP AHOY	Pam Hayward
TINKERS	Ann Jones

## **TUESDAY MORNING TRIPLES**

Shield donated by Shirley Wyman

**TUESDAYS: 9.30am-11.30am**

BOWLED OVER	Howard King
CARTEUR'S CREW	Marty Groves
CHILLIS	Chris Dean
DUNCRAIG	Nick Roddis
LONG ODDS	Malcolm Stowe
MARDI GRAS	Trevor Andrews
NO VICES	Jim Hamilton
RUBY TUESDAY	Tim Munro

SAXONS  
STONEBIRDS  
WOODSMEN

Norman Byden  
Alan McDine  
Phil Lock

### **AUSTRALIAN PAIRS - DIVISION THREE**

**TUESDAYS: 11.30am - 1.30pm**

CONVICTS	Rod Oughton
DUKES OF HAZARD	Tricia Duke
GOLD COAST	Val Spicer
JACK FROST	Mike Legge
KOALAS	Sara Carpenter
MARTYRS	Dave Sherman
PLATYPUSES	Jan Lever
TASSIE TIGERS	Richard Pearce
THREE + TWO	Terry Errington
VIXENS	Sylvia Gough
WALLABIES	Val Allison
WYLIE WOMBATS	Robin Wilson

### **WEDNESDAY MORNING**

#### **AUSTRALIAN PAIRS - DIVISION TWO**

**Wednesday 9.30am – 11.30am and 11.30am - 1.30pm**

ASHES	Chris Lamb
AYERS ROCK	Peter Drage
BARRIER REEF	Jennifer Browne
CROCODILE DUNDEE	Chris Dean
FAIR DINKUM	Roger Desmond
FIVE SHEILAS	Judy Why
FLAMING WALLABIES	Sandy Sanders
HOBART	Nick Roddis

KIWI'S	Les Board
PARAKEETS	Brian Miller
SHIP AHOY	Malcolm Smith
TRYERS	Ian Locke
WINGEING POMS	David Broad

### **WEDNESDAY SET (DORSET) TRIPLES**

#### **WEDNESDAYS: 1.30am - 4.00pm**

CHILLIS	Chris Dean
CREATORS	Di Carteur
CURLICUES	Rita Payne
NEW SHOOTS	Trevor Andrews
THE BADGERS	Chris Rod
TRIANGLES	Marie Keane

### **THURSDAY MORNING**

#### **AUSTRALIAN PAIRS - DIVISION ONE**

#### **THURSDAYS: 9.30am-11.30am**

2 POMS	Derek Jackson
BOOMERANGS	Mike Chislett
GOONDIWINDI'S	David Roch
HOT FUZZ	Mike Mead
KOOKABURRAS	Harry Nash
N.S.W/	Tim Munro
Q.E.D.	Howard King
OPALS	Tony Fellows

**THURSDAY AFTERNOON TRIPLES - DIVISION ONE**

**THURSDAYS: 1.30pm - 3.30pm & 3.30pm - 5.30pm (alternating)**

6 OF US	Jennie Brown
CONVICTION	Derrick Taylor
EARLY BIRDS	Jim Hamilton
LONGNIDDRY	Mike Page
THREE BLIND MICE	Mike Legge
WHERE'S THE JACK	Tricia Duke

**THURSDAY AFTERNOON TRIPLES - DIVISION TWO**

**Shield donated by Ron Knott**

**THURSDAYS: 1.30pm - 3.30pm & 3.30pm - 5.30pm (alternating)**

ALLSORTS	Rose Giles
OUT THERE	Di Carteur
NEW STARTERS	Kay Packer
WINDRUSH	Tim Munro
WAYFARERS	John Benn

**FRIDAY OVER 50 TRIPLES - DIVISION ONE**

**Shield donated in Memory of Marcia Butcher**

**FRIDAYS: 9.30am - 11.30am, 11.30am - 1.30pm  
and 1.30 - 3.30pm (alternating)**

BEAVERS	Trevor Andrews
DREAMERS	Monique Gandy
FLEETWOOD FIVE	Tony Bolt
HOPEFULS	Vic Mantle
LINCNOTTS	Jack Mathie
QUARRY MEN	Ernie Gordon
SARASENS	Richard White

SIXTY NINERS  
TWITCHERS

Brian Burroughs  
Nick Worsley

## **FRIDAY OVER 50 TRIPLES - DIVISION TWO**

**Shield donated by Tom & Rose Laming**

**FRIDAYS: 9.30am - 11.30am, 11.30am - 1.30pm  
and 1.30pm - 3.30pm (alternating)**

GERRY HAT TRICKS	Peter Drage
KINGS MEN	Ian Locke
NEW SHILLINGS	Tony Whittaker
PIE AND MASH	Terry Errington
SLINGERS	Tim Munro
SUNSEEKERS	Norman Sproates
WINTER SIX	John Roberts
WOODENTOPS	Tim Moss

## **FRIDAY OVER 50 TRIPLES – DIVISION 3**

**Shield donated by John Culley**

**FRIDAYS: 9.30am - 11.30am, 11.30am - 1.30pm  
and 1.30pm - 3.30pm (alternating)**

ALAS SMITH AND JONES	Malcolm Smith
CONVICTS	Rod Oughton
FOX CUBS	Sylvia Gough
GIRL POWER	Jan Lever
MOONRAKERS	Rose Giles
ROBIN HOODS	Ken Ramsey
SENIOR MOMENTS	Val Griffin
TOUCHWOOD	Pam Jeffs
WEYMOUTH ACKERS	Pete Cox

## **TUESDAY EVENING LADIES TRIPLES**

**Shield donated by Dorothy Phin**

**TUESDAYS: 6.30pm and 8.30pm**

CUCKOOS	Pam Jones
BLUEBELLES	Chris Rod
BUTTERFLIES	Shirley Bowley
DELPHINIUMS	Jill Gwillam
HONEYBUNCH	Anne White
LADYBIRDS	Erika Fry
MOONRAKERS	Jo Taylor
SNAPDRAGONS	Marie Keane
SNOWDROPS	Shelia Escott
SUNFLOWERS	Madge Churches
SWEETPEAS	Pam Bean
TULIPS	Chris Thompson

**THURSDAY EVENING MENS Two Woods Triples**

**Shield donated by P & M Read (Florists)**

**THURSDAYS: 6.30pm-8.30pm**

CHILLIS	Chris Dean
MENACES	Rob Gwilliam
GOOD TO GO	Tim Munro
UP AND COMING	Andy Boatswain
YOUNG GUNS	Kelvyn Churchill

**FRIDAY EVENING MIXED RINK**

**Shield donated by John & Margaret Marriott**

**FRIDAYS: 6.30pm-8.30pm**

BOWLING STONES	Helen Monelle
FAMILY AFFAIR	Jennie Browne
FORGETFULS	Roger Bolton
GARDENERS DELIGHT	Kelvyn Churchill

KINGFISHERS	Roy Paul
PICK & MIX	Ruby Spavins
PROSPECTORS	Mary Bull
STARTING OUT	Bob Bullin
TOWNIES	Kath Desmond
WALLACE AND GROMIT	Gwen Witchalls-Rees

### **EVENING TRIPLES - DIVISION ONE**

**Shield donated by R & B Trophies**

**MONDAY & WEDNESDAY: mainly 6.30pm - 8.30pm**

BACK AGAIN	Shirley Bowley
FRESH START	Ann Chislett
HEADBANGERS	Keith Wyman
ONE UP	Chris Dean
OUTSIDERS	Mick Moxham
SHOT 2 BITZ AGAIN	John Curran
TRIPLE JACKS	Kelvyn Churchill

### **EVENING TRIPLES - DIVISION TWO**

**Shield donated by Roy Glover**

**MONDAY & WEDNESDAY: mainly 6.30pm - 8.30pm**

DODGERS	Ann Sherman
GUYS and DOLLS	June Bolt
JACOBANS	Pam Bean
MANIC MONDAYS	Tim Munro
SO AND SO'S	Ashley Welsh
SOUWESTERS	Phil Lock
THE BIASED CREW	Steve Alcock
TINKERS	Rob Gwilliam



## **THE CLUB KITCHEN**



**The Kitchen is now being run on a concession by Gravy Boat Catering and will be open every weekday for food orders from 11am until 2pm**

## **THE DRINKS BAR**

**The Water Cooler and Hot Drink machine are available at all times the Club is open**



## **THE CLUB BAR**

**The Club Bar will open on Lunchtimes from 12noon till 2pm when staffing available**

**Open In the evening Monday to Saturday from 6pm to 9pm whenever the rinks are being played or there is an organised social event.**



# **MOONFLEET LEAGUE RULES**

## **1 Eligibility**

All players must be full members of Moonfleet 2000 IBC.

## **2 Registration**

2.1 One player from each team shall be nominated as captain. He/she will be responsible for the registration of players in that team, and payment of the fees due. The minimum number of players to be registered is:

Pairs = 3

Triples = 4

Rinks = 5

The maximum number of players to be registered is:

Pairs = 5

Triples = 6

Rinks = 7

2.2 A player may be registered in only one team in any league.

2.3 A player may be registered after the season has started as a placement for an existing player or to make up the numbers of the team. This registration must be made with the League Secretary at least 24 hours before playing. It is permissible for a deregistered player to return as a replacement in the same team at a later date.

2.4 Should a team withdraw or be expelled, the players of that team shall not be registered with another team or become a substitute in that league for the remainder of the season.

## **3 Substitutes**

3.1 Substitutes should be taken from a list displayed for that purpose and must have been entered at least 24 hours before playing. If the league concerned is one with more than one division, then the League Secretary will allocate them on playing standard to the appropriate divisions.

3.2 A team may play not more than one substitute in any one game, and a substitute must not be played as a skip.

3.3 A substitute may not play more than three times for any one team but may play for more than one team during the season.

3.4 A substitute must be denoted on the scorecard as 'SUB'.

#### **4 Ineligibility**

4.1 If a team plays an unregistered or ineligible player, the result of the game will be disregarded. The non-offending team shall be awarded 2 points and a shot count of 10-0, and the offending team 0 points and a shot count of 0-10.

4.2 If a team plays an ineligible player or players three times during a season that team shall be expelled from that league/division and the results of all games previously played will be deleted.

#### **5 Withdrawal**

If a team withdraws from the league prior to the end of the season, all results of that team will be deleted.

#### **6 Postponements**

6.1 Where a game needs to be postponed, the League Secretary must be notified with as much notice as possible. Valid reasons for a postponement are:

6.1.1 Attendance at an organised event by an outdoor bowls club to which players also belong, leaves insufficient members of the team to play even with a substitute.

6.1.2 The playing of a National or County event or competition leaves insufficient members of the team to play even with a substitute.

6.1.3 Hospitalisation that leaves insufficient members of the team to play even with a substitute.

6.1.4 Exceptional circumstances agreed by the League Secretary.

6.2 By mutual agreement, matches may be re-arranged to a time and/or date earlier than previously fixed. The League Secretary must be informed as soon as possible if a rearrangement is required. Where the match was scheduled during the first two weeks of the season, this can be re-arranged to a later date.

6.3 If a team requires a postponement for valid reasons the Captain must within 3 weeks offer the opponent two dates at convenient times

#### **7 Official Postponements**

7.1 If the rink space is not available for members to play their Nationals or County competitions prior to the date specified by the competition organisers, the League Secretary may re-arrange league fixtures bearing in mind the following criteria. The member requesting the rinks must:

7.1.1 In the view of the League Secretary have given sufficient notice of difficulty in arranging dates.

7.1.2 Accept that wherever possible they will be expected to move their own team's league games to accommodate their request.

7.1.3 The League Secretary will be expected to re-arrange games within the top divisions wherever possible, thus minimising the impact on divisions where members do not normally enter this level of competition.

7.2 All re-arrangements will be advised to the respective team captains in writing, giving an alternative date for the re-arranged fixture.

## **8. Cancellations**

Any team unable to fulfil a fixture and ineligible for a postponement shall forfeit the game. The non-offending team shall be awarded 2 points and a shot count of 10-0, and the offending team 0 points and a shot count of 0-10. If a fixture is not completed at the arranged time and has not been postponed for permitted reasons, then the full payment for the rink remains due from those members who are in attendance, unless the rink has been re-let. If no members of a team are present, then the team captain (or submitter of the entry for competitions) is responsible for making the payment on behalf of the team. If there are extenuating circumstances for the fixture not being completed, this payment can be waived or refunded by the Bowls Club Manager after consideration of a written submission.

## **9. Playing Regulations**

Play will be in accordance with EIBA rules amended as follows:

9.1 There will be no trial ends. There will be a toss to decide the start of the first end. The team winning the toss may give away the mat and jack on the first end only.

9.2 The jack will be delivered. If the jack leaves the rink or is less than 23 metres, the non-offending skip has the option of re bowling the jack or placing the jack two metres from the ditch or on the tee. The mat may also be moved. If the jack is again improperly delivered, the jack MUST go on the tee and the original team has the option of moving the mat.

9.3 Both skips must leave the head at the same time and will not be allowed thereafter to approach the head. All other players must remain behind the mat until changing ends at the same time as the skips.

9.4 If a jack in motion passes completely outside of the boundaries of the rink in play or rebounds to a distance of less than 20 metres from the mat Ilne,

the jack shall be re-spotted. If the jack passes outside the side boundary it should be placed on a prearranged spot on the rink which is two metres to the left and right of the centre line, on the side that it left the right of play. If any of the pre-defined spots are obstructed by a bowl, the jack shall be placed as near as possible to the spot on the forward side of the bowl. FOR LADIES ONLY i.e. Ladies Evening Triples (Tuesday) and Ladies Pairs should the jack leave the rink during play the end shall be declared dead and the end replayed.

9.5 A match shall end after 18 ends, or on completion of the end being played when the warning buzzer sounds. An end shall be deemed to have commenced provided the jack has been delivered from a correctly placed mat before the warning buzzer is sounded. This still applies when the jack has been bowled off the rink and has to be redelivered. If the game cannot be completed due to an electrical failure or any other reasons (but not including the incapacity of a player) then the result of the game shall stand if eight or more ends have been completed. If fewer than eight ends have been completed the match shall be rearranged by the Bowls Club Manager.

9.6 Play should commence on time but 15 minutes delay is permitted if either team is incomplete.

9.7 A rinks game may be played with only 3 players with the lead and second player using 3 bowls and the skip 2 bowls. The team shall forfeit 25% of its total score. Where this is not a whole number, the result is to be written in decimal format.

9.8 A Triples game may be played with only two players, with both players using four bowls each, and the triples team playing with three bowls each. The team that wins the end will always place the mat and bowl the jack, but the triples team will always bowl the first bowl at each end. The team with only two players will forfeit 25% of its final score. Where this is not a whole number, the results should be written in decimal form. This rule does not apply in competitions play under League rules.

9.9 If after 15 minutes of the appointed time for play to commence, and there is no reason for a postponement, a pairs team is one short, the non-offending team shall be awarded 2 points and a shot count of 10-0, and the offending team 0 points and a shot count of 0-10.

9.10 Teams in a mixed league must play a minimum of one lady/gent in each match.

9.11 The bringing of a game to a premature conclusion, unless by mutual consent, could lead to the offending team being expelled from the league.

9.12 Both scorecards are to be signed by both skips on completion of the game and placed in the scorecard box.

9.13 Dress will be in accordance with club bylaw 69 (see at end of these rules)

9.14 A match maybe started with one team being a player short, Up to 3 ends can be played by the offending tram. If the missing player then arrive the scorecard should have a line drawn under the number of ends played and the 25% rule applied to those early ends. Normal scoring continues until the end of the game when the two scores are added together.

If a team turns up one player short any player may be asked to play for them as long as ALL the following criteria are met:

9.14.1 The player concerned does not play in a higher division i.e. a Division 1 player could not play in Division 2 or 3 BUT a Division 2 or 3 player could play in Division 1

9.14.2 They CANNOT play against their own team

9.14.3 The Substitute player must not play as Skip

9.14.4 Staff member/Steward in charge agrees if any of the above are in dispute

9.15 Handicapping of Men's Rinks,(When in operation). The team handicap for each game will be the total of its member's handicap's playing on that day to be assessed by their highest playing level in the previous winter season as follows.

Minus 7 - Current and Past Internationals

Minus 6 - Liberty Trophy or National Championship qualifiers

Minus 5 - Denny Cup or Over 60 Double Rink "A" Team Players

Minus 4 - Wessex "A" Team Players

Minus 3 - Wessex "B" Team or Over 60 Double rink "B" Team Players

Minus 2 - Isle of Purbeck "A" or "B" Players or Club Competition Finalists

Minus 1 - Dorset 60+ League, County Mixed Players or Club Competition Semi Finalists

Scratch - All Others

Any Team playing only 3 players will also receive a Minus 10 handicapp

## **10. League Positions**

10.1 Two points are awarded for a win and one point to each team in a drawn game.

10.2 Shot difference shall decide the league position in the event of teams having equal points. If the shot difference is also equal then the team having the highest shots for' will take precedence.

## **11. Promotion and Relegation in Leagues with Divisions**

11.1 In leagues with divisions where all the divisions are played on the same day there shall be automatic promotions and relegations of the teams between those divisions to take effect on the season that those leagues are played. The top two teams of a lower division will be promoted to the higher division and the bottom two teams of a higher division relegated to the lower division. Newly formed teams will play in the lowest division in their first season of play.

11.2 In leagues where divisions play on different days captains may request which division/day they wish to play.

11.3 The League Secretary may request a team's agreement to the adjustment of the above rules to facilitate forming an even number of teams in a division and facilitate the maximum usage of the club rinks.

## **12 Decision**

The decision of the League Secretary on any matter is final.

## **13 Alterations to the Rules**

13.1 The Bowls Committee may amend any existing league rule, or Institute a new rule, which comes into force when displayed on the appropriate notice board.

13.2 Proposals for additions/changes to the league rules by members must be submitted in writing to the League Secretary for consideration at the next Bowls Committee Meeting. At least 6 member's signatures must be on each proposal

### **Extract from Club Bylaw 69 –applicable to dress for league games**

Smooth soled bowls footwear or socks are the only permitted footwear on the bowls green. Bowls footwear must only be put on within the building and MUST NOT be worn outside the building

For Men, Club or predominately white shirts and grey tailored trousers/shorts should be worn. White pullovers or waistcoats may be worn.

For Ladies, Club shirts or predominately white tops with collar and sleeves with regulation grey shirt or tailored trousers/shorts should be worn. Green regulation club or white waistcoats/cardigans may be worn.

### **MOONFLEET 2000 - A GUIDE TO BOWLS ETIQUETTE**

The Club's aim is to provide a playing environment which is friendly, competitive and enjoyed by all. This list, which is by no means exhaustive, is a guide to good conduct on the green. Remember bowling is a friendly game and all players should show courtesy and good sportsmanship.

- Shake hands before a match and at its conclusion.
- Switch off your mobile phone.
- Please do not walk behind a rink when a bowler on that rink is about to bowl
- Be aware of bowlers on adjacent rinks and let them bowl first if they are already on the mat.
- Stand behind the player on the mat out of their eye line and stay still and quiet so as not to distract them.
- Stand at least one metre behind the head, inside the rink markers, but not obscuring the central rink number and never stand directly behind the jack.
- Be gracious and compliment your opponent on a good shot.
- Never criticise your opponents, the green or your own team. If you cannot say something positive say nothing. Remember no one delivers a bad bowl intentionally.
- Encourage and praise the rest of your team. Bowls is a team game and everyone should be working together.
- Questions, information or instructions should only be given while you have 'possession of the rink'. You can stay on the mat until your bowl comes to rest, but then 'possession of the rink' immediately transfers to the opposing player or team so do not then ask questions.
- Learn to accept lucky shots, both for and against you – they will balance out in the long run.
- When changing ends, players should walk quickly down the centre of the rink and avoid stopping and speaking to players half way down the rink.
- Remember it's only one person's job to agree the score with his or her opposite number – the rest of the team should stand well back.
- Do not start 'breaking up the head' until the score for the end has been agreed
- Help kick bowls back after each end is completed

**FLEETWEY LIMITED  
MOONFLEET 2000 INDOOR BOWLS CLUB**

**ACTION TO BE TAKEN ON OUTBREAK OF FIRE**

## **BY PERSONS DISCOVERING THE FIRE**

Raise the alarm by **SHOUTING “Fire” “Fire” “Fire”**

Break Glass on the nearest alarm point

Telephone 999 and ask for Fire Service

You must only try to put out the fire if your exit is clear  
and you do not put yourself in danger

Evacuate the building by the nearest fire exit, if possible close any  
doors and windows and switch off any electrical equipment

## **BY RECEPTION STAFF**

### **DO NOT PANIC**

On hearing the fire alarm,

check the fire service have telephoned

If possible, Check cloakrooms, toilets and meeting room to ensure all  
have been evacuated. Then leave the building by the nearest fire exit.

### **ALL**

Do not stop to retrieve personal possessions

After evacuating the building, assemble in the car park by the Sports  
field to allow a roll call to be taken

## **DO NOT ATTEMPT TO FIGHT THE FIRE IF IN DOUBT GET OUT**

**THE ALARM POINTS** are situated by the **Main Front Door**

**Fire Exit** by side of **Rink One** at the **Bar end**

**Fire Exit door** at the **Scoreboard end** of the Bowls Hall at the end of  
**Rink One**



**Fire Exit door** at the **Scoreboard end** of the Bowls Hall at the end of **Rink Six**

**Fire Exit Side Door** at the **back** of the **Kitchen** and **Bar** store area

**Fire Exit** through the **Meeting Room** then through the Boiler Room

## **FIRE EXTINGUISHER POINTS**

**Front Door Lobby (Water)**

**Bowls Hall side of Reception Area (Water)**

**Reception (CO2)**

**Fire Exit Door by side of rink one (Water)**

**Fire exit door at scoreboard end of bowls hall on end of rink 1 (Water)**

**Fire exit door at scoreboard end of bowls hall on end of rink 6 (Water)**

**Fire exit side door at back of kitchen and bar store area (Water)**

**Fire exit in Boiler room (CO2)**

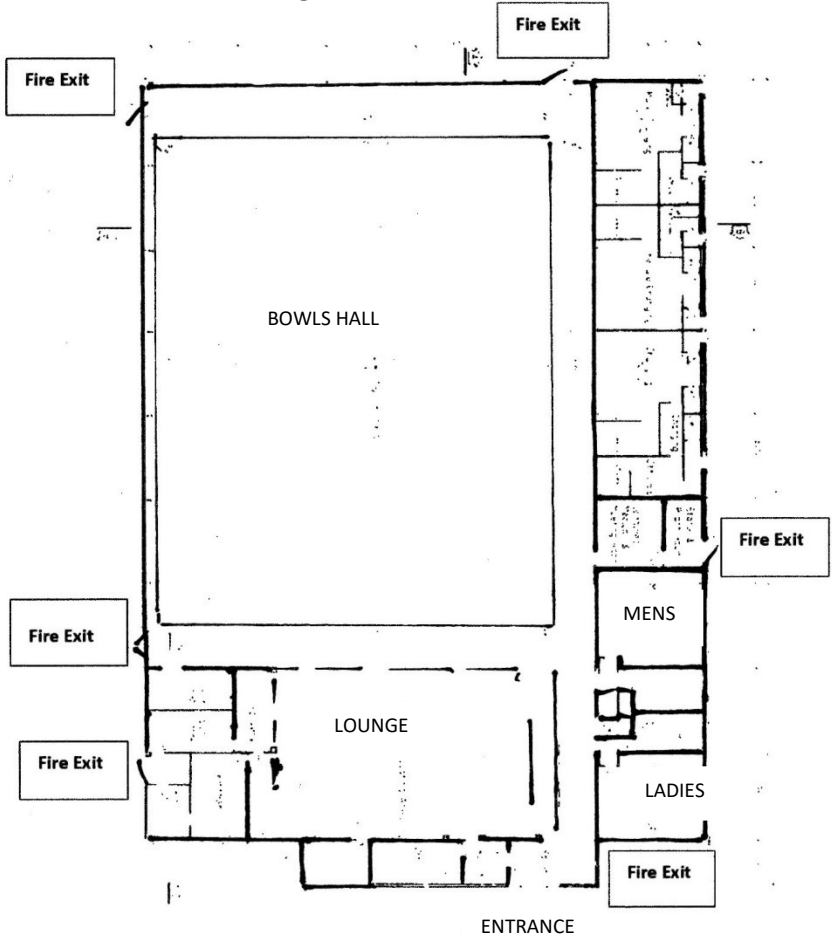
**Bin Store (Water)**

**Rink Store (CO2)**

**Kitchen (Powder)**

# PLAN OF BOWLS CLUB

## Showing Fire Exits



**P & M Read**

*Showing You Care*

*Fresh Bouquets and Arrangements*

*Same Day Delivery*

*In Dorchester*

*and Weymouth*

*Wedding Flowers*

*Funeral Tributes*

Telephone (01305) 812932

Fax: (01305) 814881

685, Dorchester Road, Broadway,



**Watch Batteries**

